



NOVEMBER 14, 2007

Investing opportunities  
with a select group  
of Canada's  
most dynamic  
junior oil & gas  
producers

# JUNIOR OIL & GAS INVESTOR SHOWCASE

NOVEMBER 14, 2007 ■ 8:30 am – 12 pm

THE SHERATON CENTRE TORONTO HOTEL

FREE ADMISSION ■ OPEN TO THE PUBLIC ■ NO REGISTRATION





## New growth strategies for junior oil and gas companies

Canada's junior oil and gas companies deliver what North America desperately needs: energy from a secure, domestic supply base; and as Ontario shifts away from coal-fired power, much of the replacement energy is expected to come from cleaning burning natural gas, which Canada's juniors produce in abundance.

Temporarily weak natural gas prices have caused a dip in the share price for much of the junior sector but these conditions have at the same time created a great buying opportunity for investors who have the information to identify companies with a winning growth strategy.

***The companies that come to the SEPAC Investor Showcase have distinguished themselves from the rest in a challenging environment.***

That's where the SEPAC Toronto Investor Showcase comes in. SEPAC, based in Calgary, is a petroleum industry association that bills itself as the home of "Canada's Oil and Gas Entrepreneurs"™ and its Toronto event, unlike many such conferences, requires no advance registration and attendance is free.

SEPAC is presenting a select group of seven companies for a half day conference starting at 8 AM, Wednesday November 14 at the Toronto Sheraton Centre hotel. The event is a unique opportunity to listen to and meet personally the CEOs of some of Canada's most innovative and dynamic junior oil and gas producers.

"Companies who will be strong growth contenders in the future will be those who have developed strategies to overcome the challenges of today", says Gary Leach, Executive Director of SEPAC.

"Those strategies may be as varied as shifting production emphasis to oil over natural gas or looking for well timed acquisition opportunities ... these are companies that have an array of exciting growth opportunities ahead of them and they want the investment community in Toronto to hear about it", added Mr. Leach.

## INDUSTRY DEFINITIONS

<b>API</b>	American Petroleum Institute
<b>bbl</b>	barrel
<b>bbls/d</b>	barrels per day
<b>bcf</b>	billion cubic feet
<b>boe/d</b>	barrels of oil equivalent per day
<b>bopd</b>	barrels of oil per day
<b>GJ</b>	gigajoule
<b>GOR</b>	gross overriding royalty
<b>JV</b>	joint venture
<b>m</b>	thousand
<b>mbbls</b>	thousand barrels
<b>mcf</b>	thousand cubic feet
<b>mcf/d</b>	thousand cubic feet per day
<b>mm</b>	million
<b>mmbbls</b>	million barrels
<b>mmcf</b>	million cubic feet
<b>mmcf/d</b>	million cubic feet per day
<b>NGLs</b>	natural gas liquids
<b>P+P</b>	proved and probable
<b>WI</b>	working interest

# SCHEDULE OF EVENTS ■ NOVEMBER 14, 2007

## THE SHERATON CENTRE TORONTO HOTEL

8:30 a.m.	Welcome and introductory remarks from SEPAC
<b>8:45 – 9:40 a.m.</b>	<b>Company presentations</b>
8:45 - 9:00	Fortress Energy Inc.
9:05 - 9:20	Seaview Energy Inc
9:25 - 9:40	JUNEX Inc.
9:45 – 10 a.m.	BREAK
<b>10:05 – 11:20 a.m.</b>	<b>Company presentations</b>
10:05 - 10:20	Exall Energy Corporation
10:25 - 10:40	Reece Energy Exploration Corporation
10:45 - 11:00	Peerless Energy Inc.
11:05 - 11:20	Result Energy Inc.
11:25 – 11:30 a.m.	Closing remarks from SEPAC
11:30 a.m. – 12 p.m.	Networking opportunity

## Showcase Highlights

### Corporate Presentations

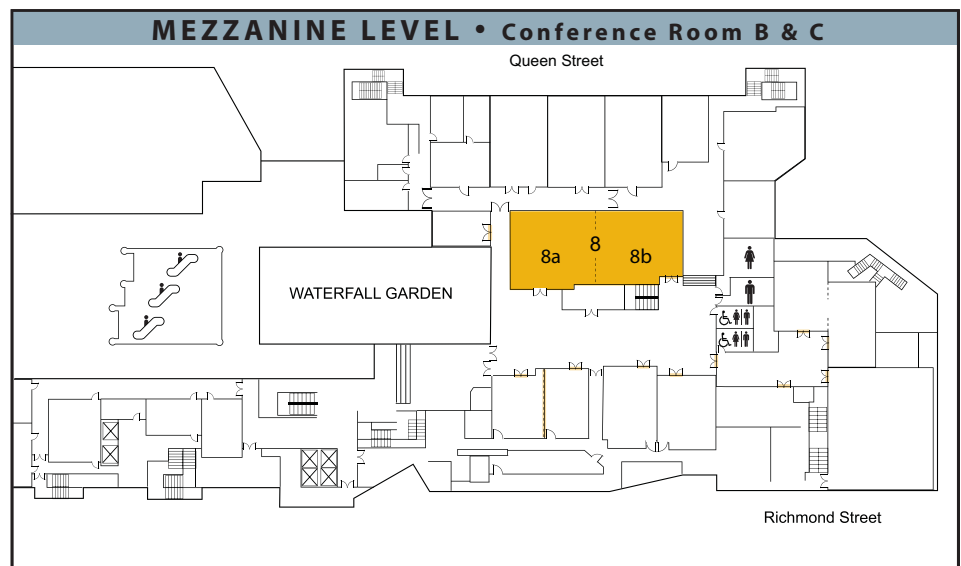
Be sure to review the corporate profiles of our 7 participating firms on pages 4 through 10. Each company will give a 15-minute presentation providing you with the chance to learn about investing opportunities with Canada's most dynamic junior oil & gas corporations. See the schedule of events to plan which sessions you'll attend.

### Corporate Tables

We encourage you to visit the back of the room to collect more information on individual companies. Each firm will have a display table offering such items as annual reports and other corporate materials.

### After the Show

Did you miss a presentation that you really wanted to see? Don't worry, all presentations, including audio, will be posted to the SEPAC website following the show. Check us out at [www.sepac.ca](http://www.sepac.ca).



## DID YOU KNOW?

- 26 of the top 100 oil and gas producers in Canada are SEPAC members?

- Source: Oilweek Magazine July 2006 Edition

- SEPAC members drilled 18.4% of all new wells in Alberta in 2006, and

- 18% in Saskatchewan
- 10% in British Columbia
- 55% in Manitoba

- Source: Daily Oil Bulletin, 26 January 2007

For more information about SEPAC email [info@sepac.ca](mailto:info@sepac.ca), call 403-269-3454 or visit the website at [www.sepac.ca](http://www.sepac.ca)

# Exall Energy Corporation

Exall Energy is a Canadian based junior oil & gas exploration and development company developing a number of currently producing, long life oil & gas assets in the prolific Western Canadian Sedimentary Basin, particularly in Alberta and British Columbia. Internationally, Exall Energy has producing assets in Texas, USA and a joint venture with Sterling Resources Limited in the UK, North Sea.

Exall Energy was formed in December 2006 as a result of a spin-out of oil & gas assets previously held by Exall Resources Limited. Exall Energy will continue to build its production and asset base through "the drill bit", and through strategic acquisitions.

Exall Energy has rapidly advanced its growth strategy through the successful acquisition of Kingsmere Exploration Ltd, in January, 2007. The acquisition added 62 barrels per day of light sweet oil production.

Exall drilled and cased seven wells (1.7 net) for oil production and six (0.2 net) for gas production since Dec 2006. On the properties acquired through Kingsmere Exploration Ltd. the Company has drilled and cased two wells (1.0 net) for oil production. One horizontal well (0.6 net) was drilled to TD and penetrated 150 meters of potentially productive sand, but was suspended due to borehole problems. An independent evaluation assigned 288 thousand barrels of probable reserves and a discounted value of \$5.5 million to the well. Exall's interest is 43.34% working interest before payout, converting to 66% working interest after payout. Three additional

development locations have been established by this well.

In June 2007 Exall acquired additional Crown leases located in the Marten Mountain area of the company's Mitsue core area. The total acreage acquired was 1,664 hectares (1,196 hA net). This will allow the company to continue development of established producing trends with ten potential drilling locations, including a re-drill of the horizontal well and an infill location.

The addition of five new oil wells (0.725 net) in the Jayar program, all on production as of March 31, has increased total production from the core property to over 110 BOEPD. Six new gas wells (0.2 net) bring production to over 30 BOEPD from the SB Harris and Layton Gas Units in Texas. Exall is currently producing a total of 200 BOEPD.

Exall Energy Corporation's proved plus probable reserves at Dec 31, 2006 were 812.6 thousand BOE. Exall's proved reserves stood at 371 thousand BOE. The composition of total proved reserves at Dec. 31, 2006 consists of 61% oil and natural gas liquids and 39% per cent natural gas. Additional reserves assigned to the horizontal well brings the total proved plus probable to 1.01 million BOE.

The Company has plans for additional capital spending of \$2.1 million through to the end of 2007 and has an inventory of more than 40 well locations (10 net) including planned drilling programs at Mitsue, Bow Island and Jayar.



TSX: EE



## Directors

<b>Roger Dueck</b>	<b>Frank S. Rebeyka</b>
<b>Stephen G. Roman</b>	<b>Michael van Rens</b>
<b>Bernard A. Lang</b>	<b>Roderick Phipps</b>

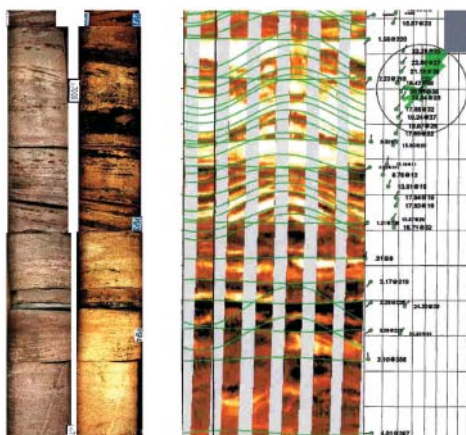
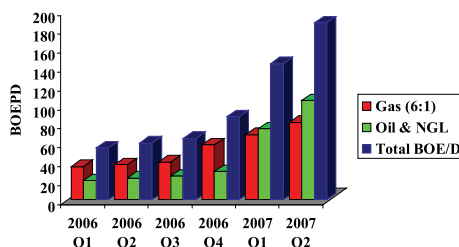
## Officers

**Stephen G. Roman, B.A.**  
Executive Chairman

**Frank S. Rebeyka, P.Geol. B.Sc. Adv.**  
President & CEO

**Roger Dueck, P.Geol.**  
Vice-President, Exploration and Operations

**Robert B. Edmunds, C.A.**  
Chief Financial Officer



**TSX: EE**

<b>Exall Energy Corporation</b> 501, 736 - 6th Ave. S.W. Calgary, AB Canada T2P 3T7	<b>Exall Energy Corporation</b> 8 King Street East, Suite 1700 Toronto, Ontario Canada M5C 1B5
--	---

Toronto Phone: 416.368.3948  
Toronto Fax: 416.368.5146  
Calgary Phone: 403.237.7820  
Calgary Fax: 403.262.4723

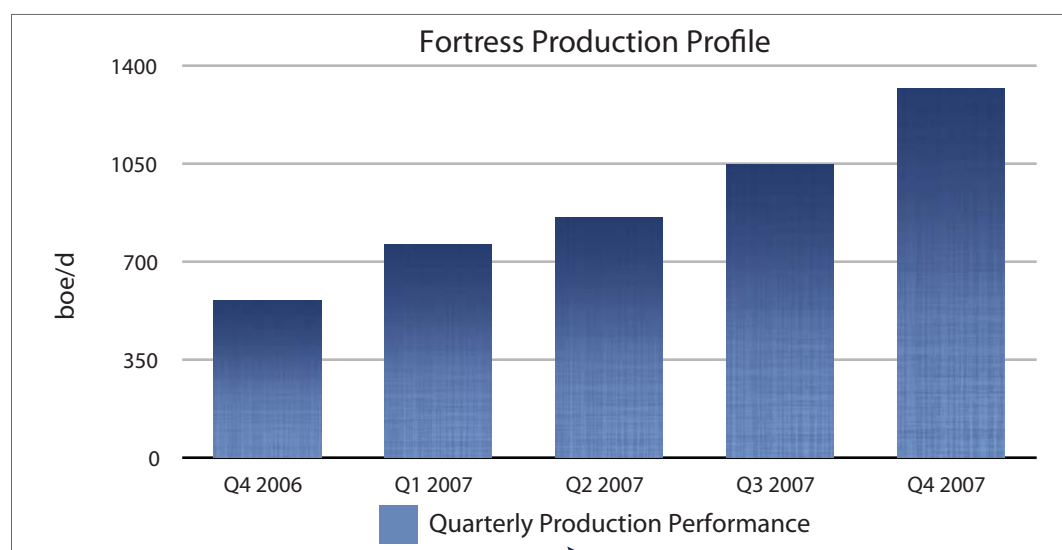
**www.exall.com**

# Acquire and Exploit

Fortress Energy Inc. is an Alberta incorporated company formed from the reorganization of SignalEnergy Inc. Fortress' primary focus is exploration for development and production of natural gas reserves in Western Canada. The Company owns an interest in approximately 130,000 net acres of land and 51,000 net acres of undeveloped land located in the Ladyfern, Buick Creek and Velma areas in NE British Columbia and the Chigwell, Bashaw, Square Creek, Halverson, West Halverson, Mearon North, Dahl areas in Alberta.

2007/08 Capital Program	
• Capital Expenditures	\$8 - 12 million
• Number of Wells	8 - 12 wells
• Production Additions	600 boe/day

• Natural Gas Production	98%
• Current Production	1,260 boe/d
• 2007 Exit Rate	1,400 boe/d
• Year-end Exit Debt	\$22.5 million
• Reserve Life Index	>10.5 years
• Tax Pools	>\$70 million
• EV per BOE	\$6.96
• EV per BOE/d	\$34,964



Fortress' production base is approximately 1,260 boe/d consisting of 95 per cent natural gas. Its strategy is to acquire assets that it can enhance through additional drilling, improving operations, and develop investment projects internally. Fortress operates most of its production and drilling operations enabling it to have complete control over cost management of its capital programs.

Its acquisition opportunities focus on properties that are early in the development cycle that offer an array of exploration, appraisal and development drilling, while maintaining finding and development costs of less than \$15.00 per boe.

Fortress has a strong balance sheet and approximately \$70 million of available tax pools that can be used to shelter future income tax and intends on using its financial strength to fund future acquisitions.

• Proven Reserves	5.2 mmmboe
• Proven & Probable Reserves	7.0 mmmboe
• Land	>130,000 gross acres
• Net Asset Value Per Share	\$7.24 (April 12, 07)

• Shares Outstanding	13.3 million
• Recent Share Price	\$2.00
• Enterprise Value	\$48.9 million
• August 07 Production	1,085 boe/d
• Current Shut in subject to Q1	1,260 boe/d



TSX Exchange: FEI

300, 505 - 3rd Street S.W.  
 Calgary, Alberta T2P 3E6  
 Tel: (403) 398-3345  
 Fax: (403) 398-3351  
 Toll Free: (866) 592-6205  
 24 Emergency (888) 890-9871  
 Email: [info@fortressenergy.ca](mailto:info@fortressenergy.ca)  
 Web: [www.fortressenergy.ca](http://www.fortressenergy.ca)

## Directors

George Watson, P. Eng., MBA

J. Cameron Bailey, CFA

Barry Giovanetto, CA

Will Franklin, MBA

John Clarkson, P. Eng

Donald Leitch, LLP

## Officers

J. Cameron Bailey, CFA  
 President  
 Chief Executive Officer

John C. Milford, P. Geol.  
 Vice President  
 Exploration and Development

Darren Jackson  
 Chief Operating Officer  
 Vice President, Operations

Robert D'Adamo, P. Land  
 Vice President  
 Sr. Land Negotiator

Jamie Jeffs, CA.  
 Chief Financial Officer

# SIX MILLION ACRES

> OF OPPORTUNITIES TO EXPLORE  
IN THE **APPALACHIAN BASIN**



## POSITIONED FOR SUCCESS

Junex holds a diversified portfolio and exploration rights on more than 6 million acres of land located in the Appalachian basin in the province of Quebec. Recent major discoveries in the United States and Eastern Canada have stimulated exploration in Quebec, which is located in a favourable geological setting for oil and gas discovery. Junex's strategy is to reduce exploration risks by entering into partnerships with other exploration companies. In parallel to its exploration efforts, Junex goal is to achieve positive cash flows from its natural brine and drilling service operations.

## A DIVERSIFIED PORTFOLIO OF PROJECTS IN A PROSPECTIVE AND UNDEREXPLORED BASIN: FROM SHALE GAS TO DEVONIAN SANDSTONE AND TRENTON/BLACK-RIVER PROSPECTS...

- > We hold a 45% interest in the Haldimand oil discovery located in Eastern Quebec. Delineation wells are expected to be drilled in the Shallow Devonian Sandstone in 2008.
- > We hold 100% interest into a one-million acre Silurian Basin where "world class" structures have been identified by seismic.
- > Right next door to Talisman's gas discovery, we are drilling Trenton/Black-River prospects.
- > In partnership with a large US-based independent gas producer, we are involved into a pilot-project to evaluate Shale gas potential on more than 150,000 acres of land.
- > Junex, either on its own or with partners, is also involved in several other projects which are currently at different development stages.

## INVESTOR INFORMATION

### JNX : TSXV

#### JUNEX INC.

3075, chemin des Quatre-Bourgeois,  
suite 103  
Québec (Québec) G1W 4Y5  
Phone : 418-654-9661  
Fax : 418-654-9661  
e-mail : [junex@junex.ca](mailto:junex@junex.ca)

#### INVESTOR RELATIONS

Mr. Dave Pépin, MBA  
418-654-9661  
[dave\\_pepin@junex.ca](mailto:dave_pepin@junex.ca)

**JUNEX**  
[www.junex.ca](http://www.junex.ca)

**PEERLESS ENERGY INC****A Focus on Quality**

TSX PRY.A PRY.B

Peerless Energy Inc. is a Calgary based oil and gas production and exploration company operating in Western Canada. The Company initiated trading with no production in May 2005, and currently produces approximately 3,500 boe/d with an estimated 2007 exit production of 3,600 to 4,000 boe/d.

**A FOCUS ON QUALITY -**  
Peerless' Business Plan

- Pursue a balanced portfolio of operated crude oil and natural gas assets of high quality, long life reserves in Western Canada through accretive acquisitions, exploitation and exploration
- Target and attain top quartile per share results in reserves, production, cash flow and earnings
- Optimize returns through strict cost control, operational focus and financial/risk management techniques
- Engage, retain and motivate top tier staff

**MANAGEMENT & DIRECTORS****KEY PERSONNEL****Wade Becker**

President, CEO &amp; Director

**Andy Magee**

VP Exploration

**Paul Smith**

VP Land

**Dan Toews**

VP Finance &amp; CFO

**Bill Turko**

VP Engineering

**DIRECTORS****Wade Becker****Howard Crone****Kelvin Johnston****Tom MacKay****James Pasioka****Robert Zakresky****SILVER (BC)**

- Current production of 750 boe/d
- Predominantly gas
- Operated with facility ownership
- Multi zone potential including a 215 BCF OGIP pool

**PEACE RIVER ARCH**

- Current production of 900 boe/d
- Balanced mix of oil and gas
- High working interest with large undeveloped land base
- Balanced mix of high impact exploration & low risk development

**WEST CENTRAL ALBERTA**

- Current production of 700 boe/d
- Balanced mix of oil and gas with multizone potential
- Long life, stable production
- Low risk development

**FOCUS AREAS****VIEWFIELD**

- Current production of 1,150 boe/d
- High quality light oil
- Operated with facility ownership
- High working interest
- Large Bakken drilling inventory

**CORPORATE INFORMATION**

P+P Reserves	10 mmmboe
Undeveloped Land (Net)	113,000 acres
Current production (apx)	3,500 boe
Debt & Working Capital	(\$42.5 million)
Production Mix	55% light oil/NGLs 45% sweet natural gas
2007 Est. Capex	\$56 million
Share Structure	
Class A Basic	49.5 million <sup>1</sup>
Class B	855,000



Suite 500, 700 - 4th Avenue S.W. Calgary, AB T2P 3J4 P: 403-263-1590 F: 403-263-1591 info@peerlessenergyinc.com www.peerlessenergyinc.com



# REECE

**ENERGY EXPLORATION CORP.**

**'RXR' ON THE TSX-V**

## CORPORATE HISTORY

Based in Medicine Hat, Alberta, Reece Energy Exploration Corp. ("Reece") is a junior oil and gas exploration and production company. Formed through the acquisition of three private companies in 2005, Reece's aggressive growth strategy focuses on a balance of exploration and developmental drilling as well as synergistic acquisitions which compliment Reece's existing assets.

## 2007 HIGHLIGHTS

Reece Energy has:

- ▶ Increased production at the end of the first half of 2007 by 134% to 883 BOE/d when compared to the end of the first half of 2006
- ▶ Increased cash flow over the same period by 114% to \$2.06 million from \$0.96 million
- ▶ Completed an amalgamation with Long View Resources Corporation ("Long View") in May, 2007
  - ▶ The amalgamation included approximately 110 BOE/d of light oil production, 1.03 MMBOE of reserves in the ground and \$3.6 million in cash after the expenses of the deal
  - ▶ The purchase price of roughly 10 million Reece shares has resulted in a diversified shareholder base for Reece
- ▶ 15 (net 8.1) wells were drilled in the first half of 2006 with a 93% success rate
  - ▶ 7 (net 4.5) gas wells were drilled in Reece's Brock area near Kindersley, Saskatchewan
  - ▶ 8 (net 3.6) oil wells were drilled in various locations throughout Reece's lands in south eastern Saskatchewan

## 2007 FORECAST

- ▶ Throughout the remainder of 2007 Reece intends to participate in up to 18 wells in addition to the 4 (net 3) that have been drilled since the end of Q2
  - ▶ 15 (net 9) gas wells and 1 (net 1) oil well are scheduled to be drilled on Reece's properties in west central Saskatchewan
  - ▶ Reece has plans to drill 2 (net .83) horizontal oil wells and 1 (net 0.33) vertical oil well on its properties in south eastern Saskatchewan
- ▶ Reece has plans to shoot 4 3D seismic projects over its lands to further distinguish possible plays in these areas by the end of the year
- ▶ Reece is expecting to exit 2007 with a production rate of 1,200 to 1,300 BOE/d and monthly cash flow of approximately \$900,000 per month assuming the completion of its planned capital expenditures

## AT A GLANCE (OCTOBER, 2007)

Shares (Basic):	27,678,552
Shares (Diluted):	28,718,695
Production (August):	1,000 BOE/d
Oil/Gas Ratio:	30% / 70%
Reserves* (P+P):	3.9 MMBOE
Reserve Life*:	10 years
Land:	62,000 net acres
Cash Flow (July):	\$575,000/mo.
Credit Facility:	\$13,000,000
N.A.V.* (BT, 10%):	\$50,712,000

\*As at December 31, 2006

## BOARD OF DIRECTORS

**Lorne Swalm**, Chairman  
**Doug McKinnon**  
**Ron Baba, Q.C.**  
**Greg Peterson**  
**Ken MacPhail**  
**Kevin Patterson, C.F.A.**  
**John Styles, P.Eng**

## MANAGEMENT

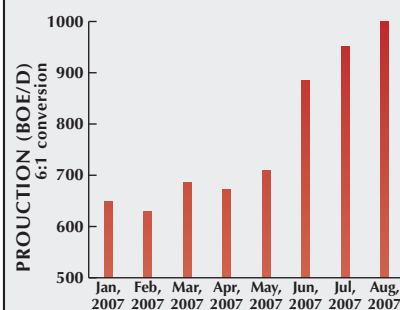
**Lorne Swalm**  
 C.E.O., President  
**Ron Stuckert**  
 C.F.O., V.P. Finance  
**Doug McKinnon**  
 C.O.O., V.P. Exploration  
**Michelle Jacobs**  
 Corporate Secretary, Treasurer

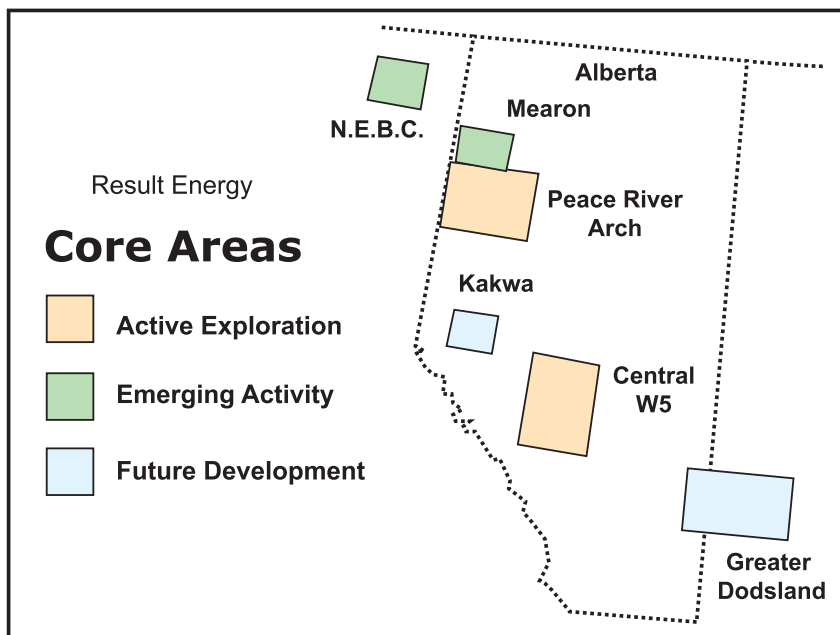
## CONTACT INFO

#200, 1111 Kingsway Ave. S.E.  
 Medicine Hat, AB T1A 2Y1

Phone: (403) 526-9700  
 Fax: (403) 527-9739

Web Site: [www.reeceenergy.com](http://www.reeceenergy.com)  
 E-Mail: [info@reeceenergy.com](mailto:info@reeceenergy.com)





# RESULT ENERGY INC.

TSX Venture Exchange: **RTE-X**

Common shares outstanding: 54,891,638

## Operations Review

- 11 wells drilled to date in 2007, with 73% (net) success rate
- 10 additional wells scheduled for Q4-07
- Current production is 1,050 boed, 90% gas
- Over 90% of Result's production growth has come via the drill bit. The company intends to continue with this strategy of organic growth.
- Finding and Developing costs are amongst the lowest in the industry with a 3 Year average of \$11.78/boed P + PA

## Exploration Activity

**Windfall** – Result has spudded the first of two wells, which will test a new liquids-rich Devonian-aged natural gas prospect at Windfall, Alberta. The company's working interest in these wells will be 33% and 28%

respectively. Preliminary drilling results from this project are expected in November.

**Peace River Arch** – Result participated in the drilling of 2.0 (1.0 net) appraisal wells on its Devonian Eureka natural gas project during September. Completion and testing operations on these wells are currently in progress. The Company also plans to spud an exploratory well on a new light oil play at Royce late in Q4, and we will resume drilling operations on our potential high-impact Devonian gas play at Mearon as soon as winter access conditions permit.

## Development Activity

**Kakwa** – Result has recently completed the drilling of a second deep-basin style gas well at Kakwa. This well has encountered multiple prospective producing horizons, which are scheduled to be completed during Q4. This is a follow-up to a successful well drilled in Q1-07, with potential tie-in of both wells to

occur in early 2008. Result's working interest in the two wells averages 22.5%.

**Pembina / Modeste** – During the second quarter, drilling operations were completed on 2.0 (1.0 net) wells at Modeste, Alberta, targeting an extension of the Company's high-deliverability Viking natural gas play. Completion, stimulation and testing operations on these wells have been delayed to Q4 due to extremely wet local surface conditions.

**Dodsland** – During the Q4-07 and Q1-08 period, Result may participate in the drilling of an additional 5 to 8 development infill wells on the Company's shallow Viking gas project at Dodsland, Saskatchewan. Over the past several months, drilling and completion costs have declined substantially in this area, allowing the Company to generate improved project economics.

## Management

Bill Matheson, President & CEO  
 Jim Reimer, Executive VP  
 Greg Leavens, Chief Financial Officer  
 Rob Stanton, VP Eng & Ops  
 Marty Scase, VP Land  
 John Wittnebel, VP Exploration  
 Shari Pusch, Corporate Secretary

## Head Office

Suite 2010, 355 – 4th Avenue SW  
 Calgary Alberta T2P 0J1  
 Contact: Bill Matheson  
 Phone: (403) 777-0007  
 Fax: (403) 234-7116  
 Website: [www.resultenergy.com](http://www.resultenergy.com)  
 Email: [admin@resultenergy.com](mailto:admin@resultenergy.com)

## Board of Directors

Bill Matheson Gary Martin  
 Nabih Faris Nick Kirton  
 Garry Kelman

## Investor Relations

Scott Koyich, Brisco Capital Partners  
 Phone: (403) 262-9888  
 Email: [requests@resultenergy.com](mailto:requests@resultenergy.com)

1670, 700- 2nd St. SW  
Calgary, AB T2P 2W1

Tel: (403) 450-3713  
Fax: (403) 668-9177  
Toll Free: (877) 242-0222  
24 Hour Emergency: (877) 886-1929  
Email: info@seaviewenergy.com  
www.seaviewenergy.com

# SEAVIEW ENERGY INC

TSX Venture Exchange: CVU.A and CVU.B

**Seaview Energy Inc.** is an innovative Canadian junior oil and gas exploration and production company staffed by highly motivated and experienced petroleum industry professionals. The team is dedicated to creating net asset value for its shareholders through strategic acquisitions, exploration, development and production of oil and natural gas. The company is focused on operating and developing high working interest core properties, focusing initially on the Peace River Arch area of northwest Alberta.

**Seaview Energy Inc.** filed a final prospectus on October 9, 2007 in connection with an initial public offering of a minimum 10,000 Units and a maximum 12,000 Units at a price of \$1,000 per Unit (minimum aggregate gross proceeds of \$10,000,000 and maximum aggregate gross proceeds of \$12,000,000). Each Unit is comprised of 400 "flow-through" Class A Shares at \$0.25 per share and 90 "flow-through" Class B Shares at \$10.00 per share. Orion Securities Inc. led a syndicate of investment dealers including Blackmont Capital Inc., FirstEnergy Capital Corp. and Canaccord Capital Corporation as agents on the public offering.



## Corporate Overview

Start-up exploration and production company with initial operations in Q4-2007.

Growth through a balance of exploration, acquisitions and development drilling.

Experienced Board of Directors and complete management team in place.

Proven track record in all aspects of the business:

- Ability to source and close accretive acquisitions.
- Demonstrated value creation through the drill bit.
- Effectively managing risk through diversified investment portfolio.
- Sophisticated market knowledge and experience.

## Corporate Objectives

Focus on 2-3 core areas offering geologic and geographic diversity.

Creating solid prospect inventory through strategic farm-ins and acquisitions:

- Focus on large land positions offering significant leverage.
- Concentrate on assets familiar to management expertise.
- Target multi-zone, quality reserve targets to minimize risk.

## Seaview and Predecessor

### Operations Summary

- Over 40,000 gross acres owned or under farm-in option in Peace River Arch.
- 7 gross (3.2 Net) operations completed to date at 100% success rate, currently producing approximately 200 Boe/d net.
- Total Proven plus Probable reserves of 445 Mboe with NPV10% as at June 1, 2007 (Sproule)

## Management

Michael Wuetherick, President & CEO

Scott Oldale, Vice President Exploration & COO

Stephanie Bunch, Vice President Finance & CFO

Davin Chandler, Vice President Engineering

Tim Campbell, Vice President Land

## Board of Directors

Paul Colborne, Chairman

Daryl Gilbert

James B. Howe

Gregory G. Turnbull

Steve R. VanSickle

Michael Wuetherick

Scott Oldale

Sanjib Gill, Corporate Secretary

## Corporate Services

Legal: McCarthy Tetreault LLP

Auditor: KPMG LLP

Evaluation Engineers: Sproule Associates Limited

Bankers: National Bank of Canada

Transfer Agent: Olympia Trust Company



# sepac

Small Explorers and Producers  
Association of Canada

Canada's Oil & Gas Entrepreneurs™

[www.sepac.ca](http://www.sepac.ca)

# The senior experts on the juniors.

brickburn.com

**Brickburn**   
Deep inside Canadian energy.

**Your direct pipeline  
to capital.**



Whether you're an emerging company looking for the capital you need to grow, or a company looking to tap into deep capital pools and maximize your visibility worldwide, come explore TSX Group's world class exchanges.

For more information about listing on Toronto Stock Exchange or TSX Venture Exchange, contact David Kaiser at (416) 947-4527 or [david.kaiser@tsx.com](mailto:david.kaiser@tsx.com)

TORONTO **stock** EXCHANGE | TSX **venture** EXCHANGE



Toronto Stock Exchange and TSX Venture Exchange. Members of TSX Group. [www.tsx.com](http://www.tsx.com)